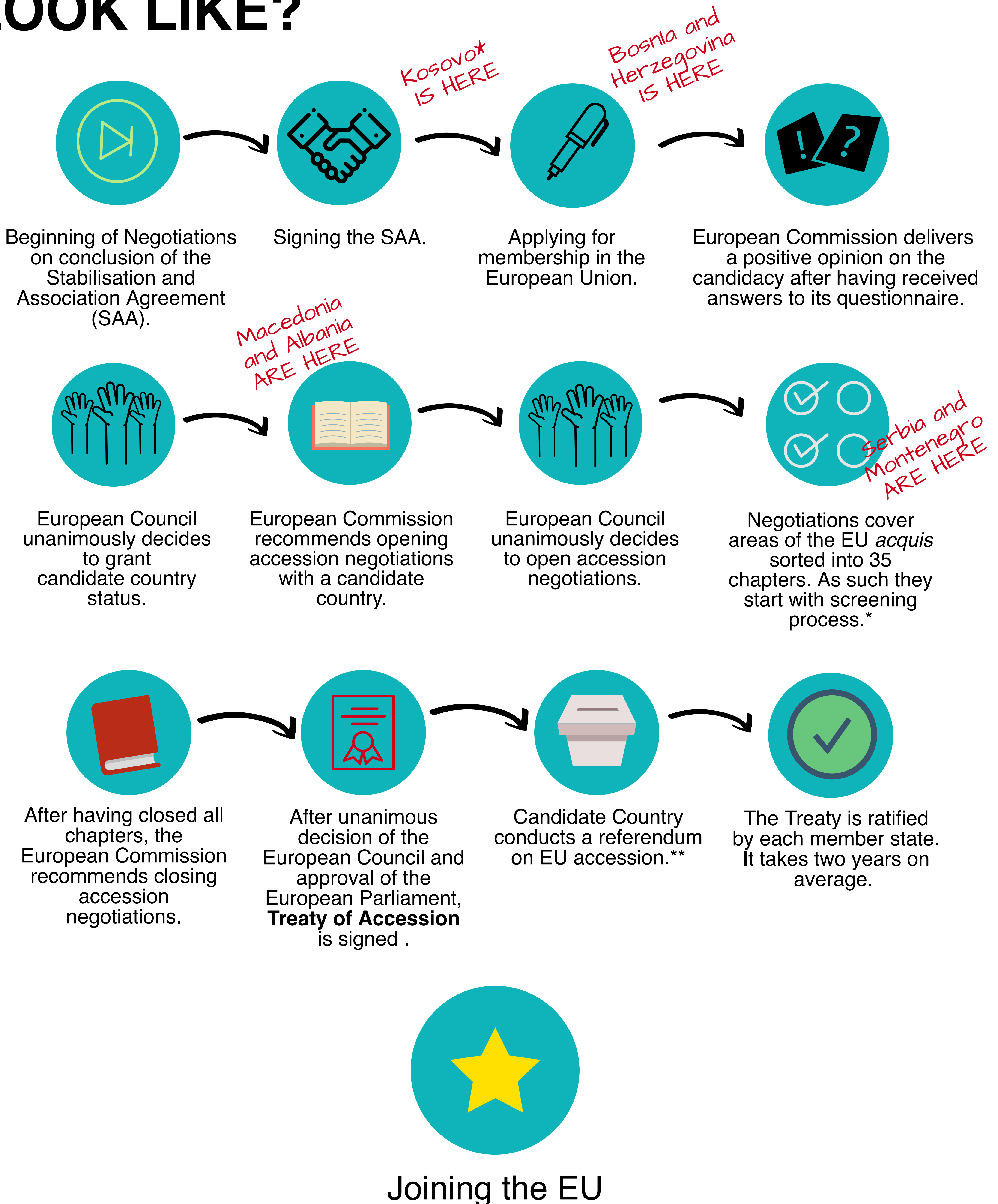


ROAD TOWARDS THE EU: HOW DOES IT LOOK LIKE?



* Screening represents a process of analysing and evaluating the degree of harmonisation of legislation of a country in question with the EU *acquis*, intended for preparation of the membership negotiations.

** A referendum on EU membership is not by fact necessary. Whether it will be put in place or not depends on the constitutional setting of the candidate country in question. Serbia will have a referendum as it is required by Serbia's constitution.